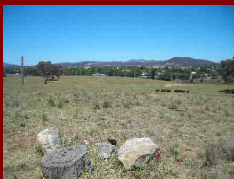




Connected Environments and Changing Landscapes of the ACT and Surrounding Region - Interacting with the Ngunawal Perspective

Oaks Estate



A uniquely local interpretation of how different environments and changed landscapes influence the experience and perception of Ngunawal territory and country.



Walk and talk with

Wally Bell and Tyrone Bell - members of the Buru and Thunderstone Ngunawal Aboriginal Corporations

Dr Fiona Dyer – Freshwater Scientist



Dr Karen Williams – Author, Independent Scholar and Artist – landscape interpretation

When: Saturday 30 November 2013, 1:00 - 5:30pm

Molonglo Gorge



Where: The remnant open forest/grassland landscape surrounding the junction of the Molonglo and Queanbeyan Rivers at Oaks Estate and the more confined section of the river corridor that passes through the Molonglo Gorge.

RSVP – booking essential: Karen@molonglocatchment.org.au by Thursday 28 November 2013

What is provided: A light afternoon tea will be provided midway through the afternoon.

What to bring and wear: Water to drink on the walk, sun protection, sturdy walking shoes, appropriate clothing for walking in paddocks of knee-high, moderately grazed tussock grass at Oaks Estate, and the along rocky walking track of the Molonglo Gorge.

Degree of difficulty: The Oaks Estate section of the walk is easy walking. The Molonglo Gorge section of the walk is moderately difficult.

Please Note: You will need to use your car to travel the few kilometres between Oaks Estate and Molonglo Gorge.